

RoyalVibe User Manual

First time use / Login

Download the **RoyalVibe** app from the Google Play Store. Download is free



- For first time registration, click on the **Register** button. The registration will take you to our website, (Health Advice Hub), where you will complete the process before coming back to **Login**
- **The Health Advice Hub, CellQuicken and Terms & Conditions** buttons all take you to the relevant website links
- To log in click the **Login** button

- Complete the user name and password (same as used on **HealthAdviceHub**) and click the **Submit** button
- If you forgot your password you can click on the Forgot Password button, which will take you to the website to reset your password.



- When login is successful select the **Select** button



dependent and click



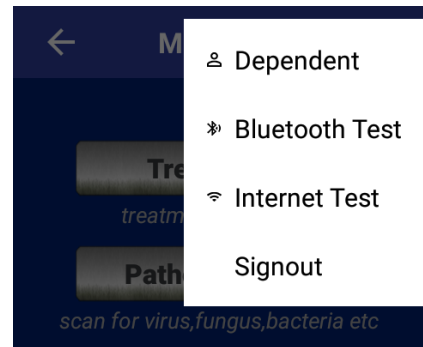
Main Menu

- The **Treatments** button takes you to select and run a single treatment
- **Pathogen Scan** button (*This feature is coming soon*)
- **Scheduled Treatments** button takes you to your scheduled treatment list allowing you to rerun a treatment already done or that is yet to be done (it will only be treatments that are scheduled)
- **Change Schedule** button takes you to the website where you can change any of your already set scheduled treatments. You can also set other treatment groupings that you have already created.
- **Information** button takes you to the information menu
- The three dots in the top right hand corner, gives you a drop down menu.

Drop Down Menu:

Gives you the following options:

- **Dependent:** Lets you choose/change the dependent
- **Bluetooth Test:** Lets you pair and check pairing with your RoyalVibe Box
- **Internet Test:** Lets you check for an active data connection
- **Signout:** Lets you signout of the application to sign in as a different user.



Click on Bluetooth Test to pair your app to your RoyalVibe Box. (Your RoyalVibe needs to be switched on for this)

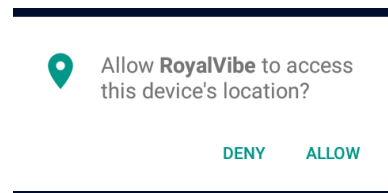
Click on the 2nd PAIR button first.

You might be prompted to allow permissions for the app.

- Click the back arrow to return to the **Settings** menu.
- Click on the 1st pair
- This menu looks a little different.
- After it scans for a while you will see a device RVxxxx (Matching the serial number marked on the RoyalVibe box)



- Click on PAIR. The button will change as seen below. Click the back arrow to go back to the previous menu. Green tick shows that the device is paired



Pathogen Scan Menu

This button takes you to the selection list of what specific pathogen you would like to scan for. **NB: This feature is not currently available yet**

Scheduled Treatments Menu

When you have clicked on the **Scheduled Treatments** button on the main menu you will come to this page. This will be a list of only all your scheduled treatments

- Here you can do a search or scroll down the list. To select one of them you will find a tick box next to name. If it is empty it has not been selected. To select, click on the tick box and it will turn red
- You can only select one treatment from the list to run
- Once you have selected the treatment you want to run you click on the **Load** button at the top of the screen.

Change Schedule Menu

This button takes you to the **Health Advice Hub** website where you can change your schedule when logged in with the same username and password as your app.

Information Menu

- The User Manual button will take you to the online manual. PDF version is also available for download from the website.
- Health Advice Hub, this will take you to the website where you can get advice and helpful information on a range of medical topics
- CellQuicken will take you to the CellQuicken website to see other products and services
- Terms & Conditions takes you to the terms and conditions online.
- Settings are for syncing your Bluetooth with the RoyalVibe Unit (RVU). This is also where you can change the channel on your device if you have multiple RVUs in your household. This allows that 2 or more RVUs can be used simultaneously from different devices (one device per RVU at a time) in the same room without interfering with each other's unit. An RVU cannot be paired to multiple devices.



Treatments Menu

When you have clicked on the **Treatments** button on the main menu you will come to this page.

- **Public Groupings** gives a list of treatments that is available for everyone to use
- **Personal Groupings** a list of groupings that you have created but not shared publicly and you have not scheduled
- **Create New Grouping** takes you to the website where you can create a new grouped treatment
- **Create New Schedule** allows you to schedule a grouping that you have created or change the schedule of one you have already set



- Click on **Personal Groupings** to continue to your treatment list

Treatment List screen

When you have clicked on the **Public** or **Personal Groupings** button on the **Select Treatment Lists** screen you will come to this page. This will be a treatment list relevant to your choice in the previous screen and whether it is Treatments, Audio or Visual

- Here you can do a search or scroll down the list. To select one you will find a tick box next to the name, if it is empty it has not been selected. To select click on the tick box and it will turn red.
- You can only select one treatment from the list to run
- Once you have selected the treatment you want to run you click on the **Load** button at the top of the screen
- You'll then see **Treatment List** for Audio. (This is for the VR features) if your program wasn't written to include Audio this will be a blank screen. If it was written with audio you can choose to tick or untick the relevant one. Click **Load** again.
- You'll see the **Treatment List** for Visual. (This is for the VR features) if your program wasn't written to include Visuals this will be a blank screen. If it was written with Visuals you can choose to tick or untick the relevant ones. Click **Load** again.

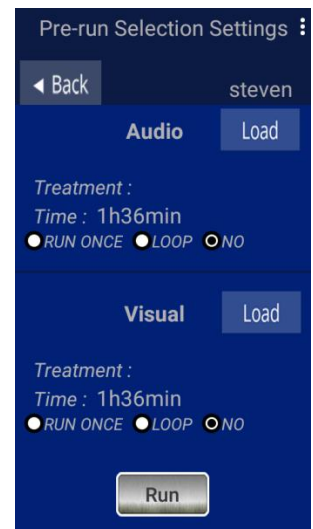


After clicking the Load button on the Pre-run Selection Setting screen.

This is relevant to Treatment, Audio and Visual

This is your final step before treating. Here you can choose to **PLAY ONCE, LOOP** or **NO** (for disable) on your audio and visual treatments. When you are done simply click RUN to start treating.

- Once you have clicked the run button it will countdown and start running the treatments
- When you want to pause a running treatment click the PAUSE button. To resume simply click the RESUME button and the countdown will continue. When pausing your RoyalVibe light will stay lit. To stop a running treatment press STOP. The **Pre-Run Selection** screen will appear, and the RoyalVibe light will return to a dim flicker.



At the top you'll see your Treatment name and running: 1 of 25 (for example) You will see a circle running with the remaining time left of your treatment displayed underneath and in the center, you'll see a larger timer showing the current running treatment's time left. Once it gets to 00:00 it will start running: 2 of 25 (for example) and the timer in the centre will start counting down from a different time. The main counter at the bottom will continue to count down. Your **RoyalVibe** is currently running a treatment.

